

UV- J1002-DOM2

Precision is
our business



UV-J1002-DOM

UV-J1002-DOM2

APPLICATION

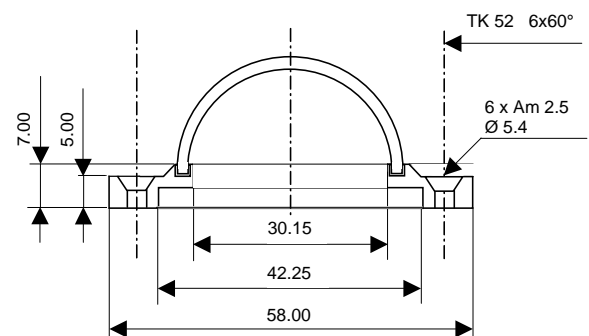
The polished quartz dome *UV-J1002-DOM* is sealed in a high-grade-steel flange. The used material HPFS (fused silica) is a high purity synthetic amorphous silicon dioxide.

SPECIFICATION

Softing point	1585°C
Annealing point	1042°C
Density	2.2 g/cm ³
Refractive index	1.44887 @ 1128.64 nm
	1.47455 @ 365.01 nm
	1.50860 @ 248.00 nm

Physical data

Weight	0.068 kg
Flange diameter out	58.0 mm
Flange thickness	5.0 mm
Flange material	high-grade-steel
Dome diameter	36.0 ± 0.1 mm
Dome wall thickness	1.7 ± 0.1 mm
Dome material	Corning HPFS Fused Silica
Drawing	



CMS – Ing. Dr. Josef Schreder
Eggerstrasse 8
6322 Kirchbichl
AUSTRIA

Tel: 0043 / (0)5332 / 77056
Fax: 0043 / (0)5332 / 76692
E-Mail: info@schreder-cms.com