

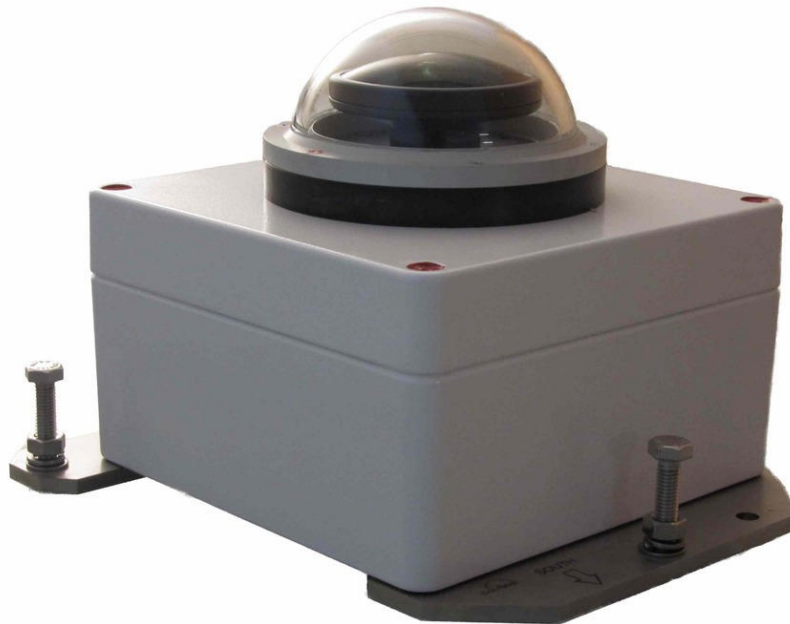


- Calibration of instruments for radiation measurements
- Measurement of radiation from UV to IR
- Software for special requirements

The Austrian  
Calibration Measurement Software Company

Instruction Manual

# Total Sky Camera Update to the latest Cloudcam version



Automatic Sky Imaging System

**Precision** is  
our **business**

**CMS Ing. Dr. Schreder GmbH**  
Lofererstraße 32, A-6322 Kirchbichl  
Tel. : 0043 / (0)5332 / 77056-00  
Fax.: 0043 / (0)5332 / 77056-14  
E-Mail: [info@schreder-cms.com](mailto:info@schreder-cms.com)  
Web.: [www.schreder-cms.com](http://www.schreder-cms.com)

The product VIS-J1006 (Total Sky Camera) is discontinued by 1st July 2016. The ASI-16 (All Sky Imager) is the next generation with modern electronics. Ongoing Service for the Total Sky Camera is offered, to keep it a robust working instrument.

### Cloud camera software update - news 20160927:

It is recommended to install the latest software version 'Cloudcam\_Control 3.4.4.1' including 'Cloudcam\_Server 4.5' on your system. In comparison to 'Cloudcam\_Control 3.0', it can prevent the All Sky Imager from being damaged by sudden power off. It is more reliable and offers additional features.

Please go to our www-site: <http://www.schreder-cms.com/en/camera.htm>

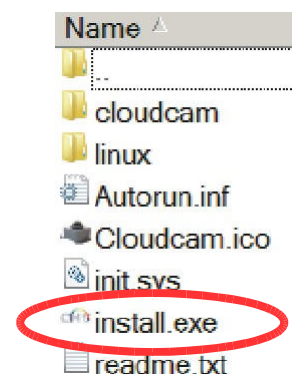
Download the actual zip-File *Install\_Cloudcam\_3\_4\_4\_1.zip* (red circle in the fig. below).



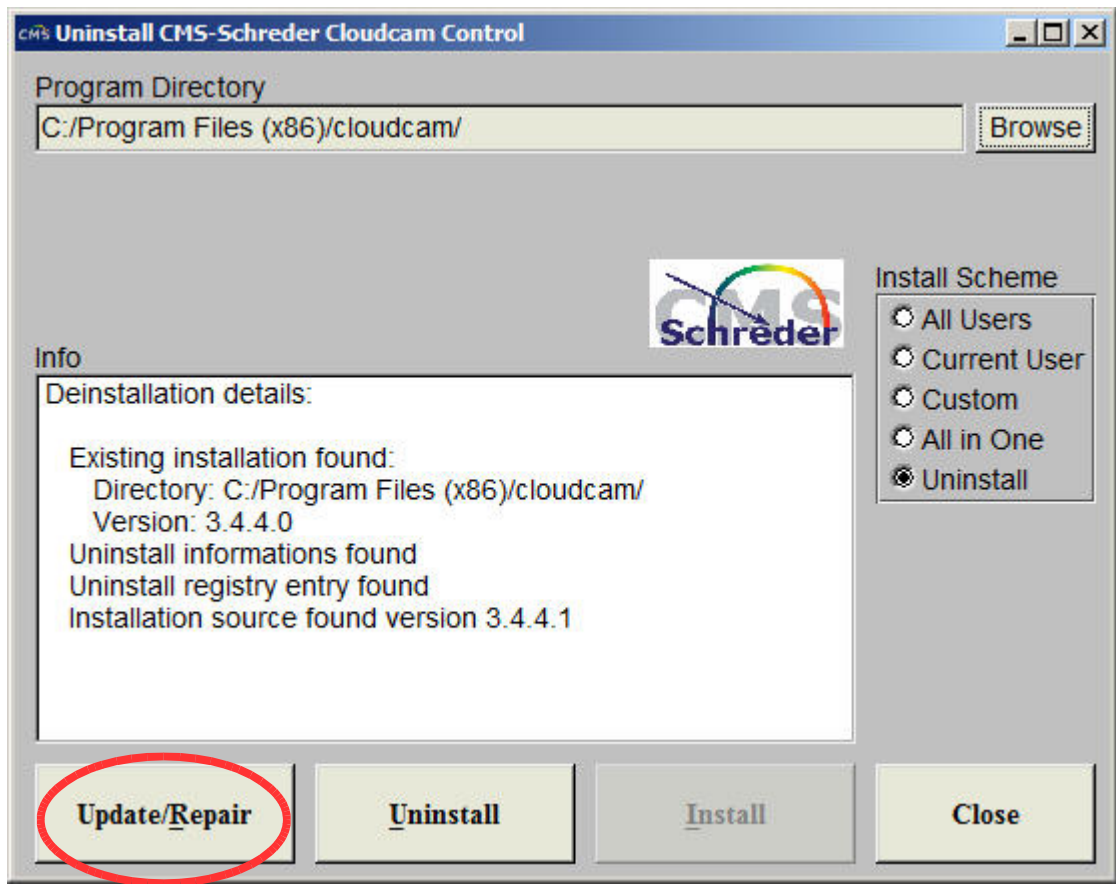
Unzip the file and start the installation.

Go into the directory '*Install\_Cloudcam*'.

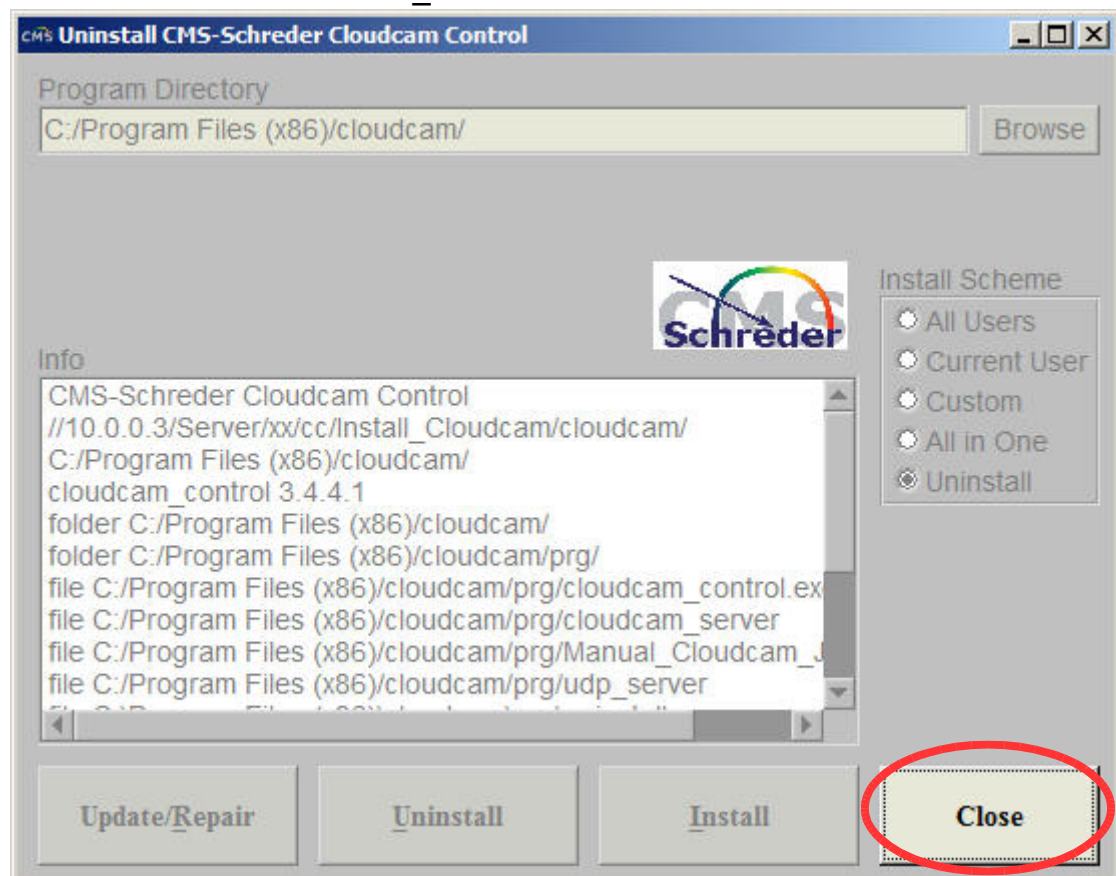
Start the installation by pressing '*install.exe*'



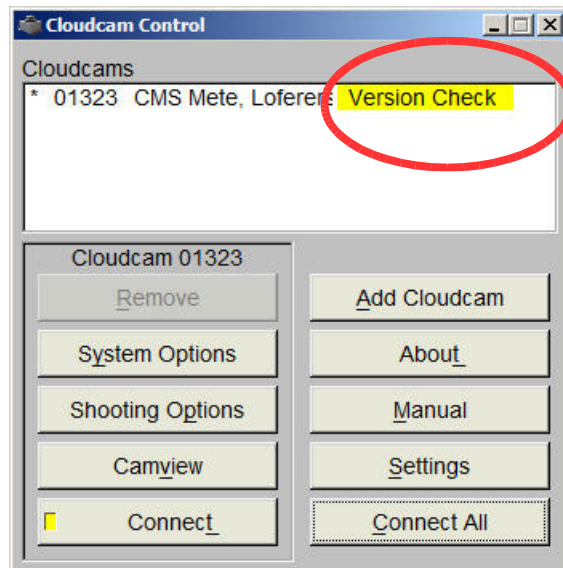
Press Update/Repair and the the update will be carried out.



press 'Close'. Now the newest Cloudcam\_Control software is installed.



Start the Cloudcam\_Control.  
A version check is carried out.



System will shut down and then restarts again.  
Click on 'About'. You can see that the newest version of *Cloudcam\_Control* and *CloudCam\_Server* is installed.

